

Pressure Switches

A comprehensive range of Pressure Switches, providing a range of different options for converting pressure changes into an electrical signal. The range includes electromechanical and electronic switches suitable for pneumatic and all fluid applications.

Strong, versatile →



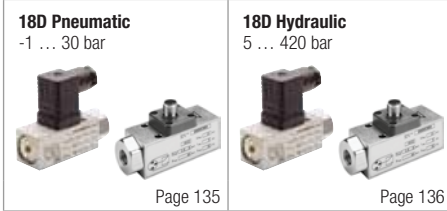
Light, compact, easy to use ↗



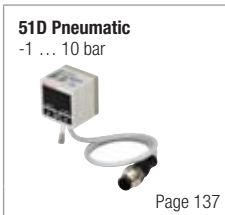
Fast Find Guide

Please note: These products represent only part of the IMI Precision Engineering pressure switch range. If you can't see the option you require please contact us.

● Electro-Mechanical Pressure Switches



● Electronic Pressure Switches



ELECTRO-MECHANICAL PRESSURE SWITCH

18D Pneumatic -1 ... 30 bar

- Gold-plated contacts
- High cycle life
- Vibration resistant to 15 g
- Microswitch approved by UL and CSA
- Intrinsically safe operation

Technical Data

Medium:
For filtered, lubricated or non lubricated compressed air, neutral and incombustible gases

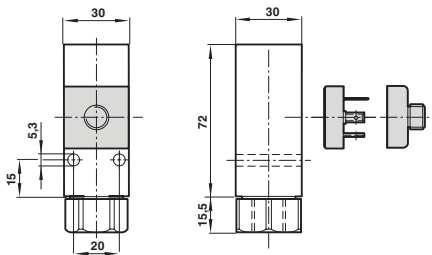
Operation:
Diaphragm

Ambient temperature:
-10°C ... +85°C
except for ATEX versions
Air supply must be dry enough to avoid ice formation at temperatures below +2°C

Repeatability:
±4%, of full scale



Dimensions



Models

Accessories

Standard Model	Pressure range (bar)	Fluid connection	Electrical connection	Switching pressure difference (bar)	Max. over pressure (bar)	Plug	Electrical connector M12 x 1 Straight x 2 m long 90° x 2 m long
	0880100000000000	-1 ... 0	G1/4	DIN EN 175301-803 Form A	0,15 ... 0,18	80	-
	0880110000000000	-1 ... 1	G1/4	DIN EN 175301-803 Form A	0,25 ... 0,35	80	-
	0880200000000000	0,2 ... 2	G1/4	DIN EN 175301-803 Form A	0,20 ... 0,35	80	-
	0880300000000000	0,5 ... 8	G1/4	DIN EN 175301-803 Form A	0,35 ... 0,85	80	-
	0880400000000000	1 ... 16	G1/4	DIN EN 175301-803 Form A	0,40 ... 1,20	80	-
	0880600000000000	1 ... 30	G1/4	DIN EN 175301-803 Form A	1,00 ... 5,00	80	-
	0880326000000000*	0,5 ... 8	G1/4	DIN EN 175301-803 Form A	0,35 ... 0,85	80	0570110000000000
	0881200000000000	0,2 ... 2	Flange	DIN EN 175301-803 Form A	0,20 ... 0,35	80	-
	0881300000000000	0,5 ... 8	Flange	DIN EN 175301-803 Form A	0,35 ... 0,85	80	-
	0881400000000000	1 ... 16	Flange	DIN EN 175301-803 Form A	0,40 ... 1,20	80	-
	0880360000000000	0,5 ... 8	G1/4	M12 x 1	0,35 ... 0,85	80	0523057000000000 0523058000000000
	0880460000000000	1 ... 16	G1/4	M12 x 1	0,40 ... 1,20	80	0523057000000000 0523058000000000

MODELS FOR WATER APPLICATIONS							
	0880323000000000	0,5 ... 8	G1/4	DIN EN 175301-803 Form A	0,35 ... 0,85	80	0570110000000000 -

MODELS CONFORMING TO ATEX – ZONE 2 AND 22 (Ex II 3G/D)							
	0880380000000000	0,5 ... 8	G1/4	DIN EN 175301-803 Form A	0,35 ... 0,85	80	- - -
	0880480000000000	1 ... 16	G1/4	DIN EN 175301-803 Form A	0,40 ... 1,20	80	- - -

* Switch is LABS free, plug needs to be ordered separately, all other DIN connector versions include standard connector plug.

ELECTRO-MECHANICAL PRESSURE SWITCH

18D Hydraulic 5 ... 420 bar

- Microswitch with gold plated contacts
- High number of switching cycles
- Vibration resistant to 15 g
- Microswitch approved by UL and CSA
- Intrinsically safe operation

Technical Data

Medium:
For neutral, self lubricating fluids, e.g. hydraulic oil, lube oil, light fuel oil

Operation:
Piston type sensor system

Ambient/Media temperature:
-25°C ... +80°C
Air supply must be dry enough to avoid ice formation at temperatures below +2°C

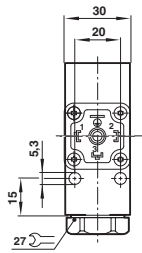
Media viscosity:
Up to 1000 mm²/s

Repeatability:
±4%, of full scale

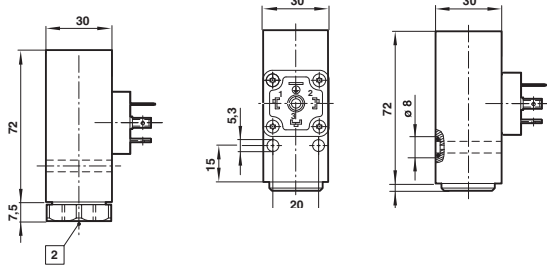


Dimensions



G1/4



Flange



Models

Standard Model	Pressure range (bar)	Fluid connection	Electrical connection	Switching pressure difference (bar)	Max. over pressure (bar)	Connector DIN EN 175301-803
	5 ... 70	G1/4	DIN EN 175301-803 Form A	10,5 ... 15	400	0570110000000000 (Form A)
	10 ... 160	G1/4	DIN EN 175301-803 Form A	11 ... 17	400	0570110000000000 (Form A)
	25 ... 250	G1/4	DIN EN 175301-803 Form A	11 ... 17	400	0570110000000000 (Form A)
	40 ... 420	G1/4	DIN EN 175301-803 Form A	17 ... 38	600	0570110000000000 (Form A)

All versions include standard connector plug.

Accessories



ELECTRONIC PRESSURE SWITCH

51D Pneumatic -1 ... 10 bar

- System pressure (unit bar, psi, Mpa, KPa, kgf/cm², mmHg, InHg or mmH₂O) selectable
- High accuracy and resolution
- Switching status indicated by LED

Technical Data

Medium:
For filtered, lubricated or non lubricated compressed air, neutral and incombustible gases

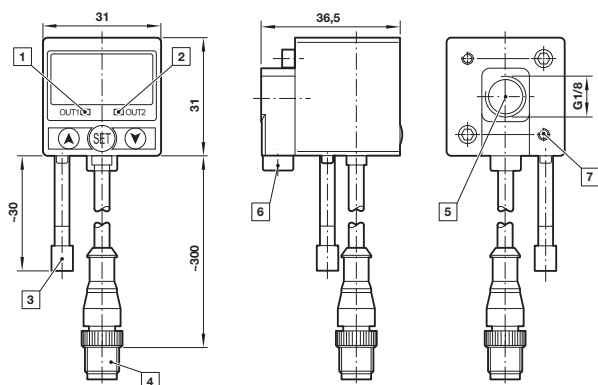
Ambient temperature:
0°C ... +50°C
Air supply must be dry enough to avoid ice formation at temperatures below +2°C

Display:
3 1/2 digit LED

Repeatability (switch output):
≤ ±0,2% of full scale (FS) ±1 digit
- without temperature sensitivity



Dimensions



- 1 Switch OUT 1, green LED
- 2 Switch OUT 2, red LED
- 3 Dustproof protector
- 4 Connector M12 x 1
- 5 Inlet port
- 6 Alternative inlet port G1/8 plugged
- 7 Thread for mounting screw

Electrical parameters

Electrical connection:	M12 x 1
Power supply:	12 ... 24 V d.c.
	24 V d.c. (PNP) maximum
	30 V d.c. (NPN) maximum

Electrical connection M12 x 1

PIN-No.	Signal	Cable colour
1	+UB	Brown
2	Out 2	White
3	-	Blue
4	Out 1	Black



Models

Model	Port size	Switching pressure range (bar)	Over pressure (bar)	Output signal	Mounting bracket (wall mounting)	Mounting bracket (bottom mounting)	Panel mounting kit (safety adaptor & panel adaptor)
0860810000000000	G1/8	-1 ... 10	15	2 x PNP	0860000000000000	0860001000000000	0860002000000000 & 0860003000000000
0860815000000000	G1/8	-1 ... 10	15	2 x NPN	0860000000000000	0860001000000000	0860002000000000 & 0860003000000000
0860820000000000	G1/8	-1 ... 1	3	2 x PNP	0860000000000000	0860001000000000	0860002000000000 & 0860003000000000
0860825000000000	G1/8	-1 ... 1	3	2 x NPN	0860000000000000	0860001000000000	0860002000000000 & 0860003000000000

Accessories

