

# Fittings, tubing & accessories

The product group most associated with the 'Enots' brand, fittings are of vital importance, since they are used to connect all other products and make them operate. The IMI Precision Engineering range includes labour saving push in types in composite, brass and stainless steel for all manner of applications.

We then have compression fittings ranges suitable for heavier industry and even a push in fitting suitable for vehicle braking systems.



Add to this a whole selection of BSP connectors, flow regulators, non return valves, air fuses, blow guns, flexible hoses and quick release connectors and you have one of the industries' largest accessory ranges around.








# Fast Find Guide

**Please note:** These products represent only part of the IMI Precision Engineering fittings range. If you can't see the option you require please contact us.

## ● Fittings

<p><b>Pneufit push-in fittings</b> Ø 4 ... 14 mm</p>  <p>Page 189</p>	<p><b>Pneufit C composite fittings</b> Ø 3 ... 16 mm</p>  <p>Page 189</p>	<p><b>BSP &amp; hose fittings</b> M5, 1/8" ... 1" BSP</p>  <p>Page 199</p>	<p><b>Pneufit C selection box</b></p>  <p>Page 198</p>
--	--	---	---

## ● Tubing & Hoses

<p><b>Nylon tubing</b> Ø 4 ... 16 mm</p>  <p>Page 202</p>	<p><b>Polyurethane tubing</b> Ø 4 ... 12 mm</p>  <p>Page 202</p>	<p><b>Pneuflex tubing</b> Ø 6 ... 8 mm</p>  <p>Page 203</p>	<p><b>Tube cutter</b></p>  <p>Page 203</p>	<p><b>Tubing channels &amp; clips</b> Ø 6 ... 8 mm</p>  <p>Page 203</p>
--	---	--	---	--

## ● Accessories

<p><b>M/S</b> Porous plastic silencers M5, G1/8 ... G1</p>  <p>Page 204</p>	<p><b>T40 series</b> Sintered bronze silencers M5, G1/8 ... G1</p>  <p>Page 204</p>	<p><b>M/1500 series</b> Exhaust filters G1/8 ... G1</p>  <p>Page 204</p>	<p><b>MB series</b> Silencers R1/8 ... R1</p>  <p>Page 205</p>	<p><b>238 series</b> Single shut off quick release couplings</p>  <p>Page 206</p>	<p><b>60 series</b> Ball valves 1/8" ... 1 1/2"</p>  <p>Page 207</p>
<p><b>M/7300</b> Sleeve valve G1/8 ... G1/2</p>  <p>Page 208</p>	<p><b>BG series</b> Blow guns</p>  <p>Page 208</p>	<p><b>T1000 Uni-directional</b> M5, G1/8 ... G1/2</p>  <p>Page 209</p>	<p><b>T1100 Bi-directional</b> G1/8 ... G1/2</p>  <p>Page 209</p>	<p><b>T20</b> M5, G1/8 ... G1/2</p>  <p>Page 210</p>	<p><b>COT, COK, COS, COL</b> BANJO FLOW REGULATORS (COMPOSITE BODY)</p>  <p>Page 196</p>
<p><b>10K51, BANJO FLOW REGULATORS</b> (METAL BODY)</p>  <p>Page 196</p>	<p><b>16K51, BANJO FLOW REGULATORS</b> (METAL BODY)</p>  <p>Page 201</p>	<p><b>COOGL</b> Non-return valves Ø 4 ... 12 mm</p>  <p>Page 211</p>	<p><b>T70</b> Quick exhaust valves G1/8 ... G1/2</p>  <p>Page 212</p>		

# PUSH-IN FITTINGS

## ● PNEUFIT

Metric Ø 4 ... 14 mm O/D tube



- Compact units featuring retained collets and positive tube anchorage
- Silicone free O-ring seals
- Non-PTFE based thread sealant on all BSP taper threads
- Easy tube insertion for rapid assembly
- Internal hexagon on straight adaptors allows assembly in confined spaces
- Wide range of types available
- Reliable and corrosion resistant

## Technical Data

### Medium:

Compressed air

### Operating pressure:

Vacuum – 18 bar unless otherwise stated (dependant on tubing specification)

### Ambient temperature:

-20°C ... +80°C

Air supply must be dry enough to avoid ice formation at temperatures below +2°C

### Tubing:

Nylon 11 or 12, polyurethane 85 to 98

## Materials

### Body:

Nickel plated brass or glass filled nylon

### Collet:

Nickel plated brass

### 'O' ring:

Silicone free nitrile rubber

### Sealing washer (parallel threads):

Nitrile 'O'-ring

### Thread sealant:

Non-PTFE

## ● PNEUFIT C

Metric Ø 4 ... 16 mm O/D tube



- Pneufit C push in fittings represent one of the industries largest ranges of industrial fittings, with in excess of 1,000 shapes and sizes
- Assembly times can be reduced to the minimum by using the parallel threaded versions, or choose taper to ensure perfect sealing under less than ideal port conditions
- Body material is either PBT or nickel plated brass offering good resistance to corrosion or contamination, and all components are retained within the body to make a perfect seal every time
- In addition to standard shapes, the range also includes manifolds, banjo flow regulators isolating valves and other items to offer maximum benefit from using standard widely available parts

## Technical Data

### Medium:

Compressed air

### Operating pressure:

750 mm Hg to 10 bar

### Ambient temperature:

-20°C ... +60°C

Air supply must be dry enough to avoid ice formation at temperatures below +2°C

### Tubing:

Nylon 11 or 12, polyurethane 85 to 98

## Materials

### Body:

PBT

### Seals:

NBR (silicone free) u-packing and O-rings

### Threaded bodies:

Nickel plated brass

### Release sleeve and backing ring:

POM

### Grab-ring:

Stainless steel

### Collar:

Nickel plated brass

### Thread sealant:

Chemitech G-175L

**Warning:** The push-in tube fittings in this section must not be used in vehicle air braking and ancillary systems. For push-in fittings suitable for these applications please refer to our Fleetfit range on our website.

## PUSH-IN FITTINGS

Straight adaptors and connectors

### ● Straight Adaptor (External & Internal) Parallel



Metric & BSPP Thread	O/D Tube	Pneufit	Pneufit C
M5	4	102250405	C02250405
M5	6	102250605	C02250605
G1/8	4	102250418	C02250418
G1/8	6	102250618	C02250618
G1/8	8	102250818	C02250818
G1/8	10	102251018	C02251018
G1/4	4	–	C02250428
G1/4	6	102250628	C02250628
G1/4	8	102250828	C02250828
G1/4	10	102251028	C02251028
G1/4	12	102251228	C02251228
G3/8	4	–	C02250438
G3/8	8	102250838	C02250838
G3/8	10	102251038	C02251038
G3/8	12	102251238	C02251238
G3/8	14	102251438	–
G3/8	16	–	C02251638
G1/2	8	–	C02250848
G1/2	10	102251048	C02251048
G1/2	12	102251248	C02251248
G1/2	14	102251448	–
G1/2	16	–	C02251648

### ● Straight Adaptor (External & Internal) Taper



BSPT Thread	O/D Tube	Pneufit	Pneufit C
R1/8	4	101250418	C01250418
R1/8	6	101250618	C01250618
R1/8	8	101250818	C01250818
R1/8	10	101251018	C01251018
R1/8	12	–	C01251218
R1/4	4	101250428	C01250428
R1/4	6	101250628	C01250628
R1/4	8	101250828	C01250828
R1/4	10	101251028	C01251028
R1/4	12	–	C01251228
R3/8	4	–	C01250438
R3/8	6	–	C01250638
R3/8	8	101250838	C01250838
R3/8	10	101251038	C01251038
R3/8	12	101251238	C01251238
R3/8	16	–	C01251638
R1/2	6	–	C01250648
R1/2	8	101250848	C01250848
R1/2	10	101251048	C01251048
R1/2	12	101251248	C01251248
R1/2	16	–	C01251648

### ● Straight Adaptor (Internal Hex Only) Parallel



Metric & BSPP Thread	O/D Tube	Pneufit C
M5	4	C022A0405
M5	6	C022A0605

### ● Bulkhead Connector



O/D Tube	Bulkhead Thread	Pneufit	Pneufit C
4	M10x1,0	100290400	–
4	M12 x 1	–	C00290400
6	M14 x 1	–	C00290600
6	M14x1,5	100290600	–
8	M16 x 1	–	C00290800
8	M16x1,5	100290800	–
10	M20 x 1	–	C00291000
10	M20x1,5	100291000	–
12	M22x1	–	C00291200
12	M24x1,5	100291200	–
14	M24x1,5	100291400	–

## PUSH-IN FITTINGS

Straight adaptors and connectors

### ● Straight Union (Equal)



O/D Tube	O/D Tube	Pneufit	Pneufit C
4	4	100200400	C00200400
6	6	100200600	C00200600
8	8	100200800	C00200800
10	10	100201000	C00201000
12	12	100201200	C00201200
14	14	100201400	-
16	16	-	C00201600

### ● Straight Union (Unequal)



O/D Tube	O/D Tube	Pneufit C
6	4	C00200604
8	4	C00200804
8	6	C00200806
10	6	C00201006
10	8	C00201008
12	8	C00201208
12	10	C00201210
16	12	C00201612

### ● Straight Adaptor (Female Thread)



Thread	O/D Tube	Pneufit C
M5	4	C02260405
G1/8	4	C02260418
G1/8	6	C02260618
G1/8	8	C02260818
G1/8	10	C02261018
G1/4	4	C02260428
G1/4	6	C02260628
G1/4	8	C02260828
G1/4	10	C02261028
G1/4	12	C02261228
G3/8	4	C02260438
G3/8	6	C02260638
G3/8	8	C02260838
G3/8	10	C02261038
G3/8	12	C02261238
G1/2	8	C02260848
G1/2	10	C02261048
G1/2	12	C02261248

### ● Stem Reducer



O/D Stem	O/D Tube	Pneufit	Pneufit C
6	4	100230604	C00230604
8	4	100230804	C00230804
8	6	100230806	C00230806
10	4	100231004	-
10	6	-	C00231006
10	8	100231008	C00231008
12	6	100231206	C00231206
12	8	100231208	C00231208
12	10	100231210	C00231210
14	8	100231408	-
14	10	100231410	-
14	12	100231412	-
16	12	-	C00231612

### ● Stem Union (Equal)



O/D Stem	Pneufit	Pneufit C
4	100220400	C00220400
6	100220600	C00220600
8	100220800	C00220800
10	100221000	C00221000
12	100221200	C00221200

### ● Stem Expander (Stem/Tube)



O/D Stem	O/D Tube	Pneufit C
4	6	C00230406
6	8	C00230608

## PUSH-IN FITTINGS

Straight adaptors and connectors

### ● Straight Stem Adaptor - Parallel



		Pneufit
BSPP Thread	O/D Stem	
G1/8	4	102150418
G1/8	5	102150518
G1/8	6	102150618
G1/8	8	102150818
G1/4	4	102150428
G1/4	5	102150528
G1/4	6	102150628
G1/4	8	102150828
G1/4	10	102151028
G3/8	8	102150838
G3/8	10	102151038
G3/8	12	102151238
G3/8	14	102151438
G1/2	10	102151048
G1/2	12	102151248
G1/2	14	102151448

### ● Straight Stem Adaptor - Taper



		Pneufit
BSPT Thread	O/D Stem	
R1/8	4	101150418
R1/8	6	101150618
R1/8	8	101150818
R1/4	4	101150428
R1/4	6	101150628
R1/4	8	101150828
R1/4	10	101151028
R3/8	10	101151038
R3/8	12	101151238
R1/2	12	101151248

### ● Plug



		Pneufit C
O/D Tube		
4		C00040400
6		C00040600
8		C00040800
10		C00041000
12		C00041200
16		C00041600

### ● Cap (Female Plug)



		Pneufit C
O/D Tube		
4		C00120400
6		C00120600
8		C00120800
10		C00121000
12		C00121200

## PUSH-IN FITTINGS

Elbow adaptors and connectors

### ● Elbow Union (Equal)



O/D Tube	O/D Tube	Pneufit	Pneufit C
4	4	100400400	C00400400
6	6	100400600	C00400600
8	8	100400800	C00400800
10	10	100401000	C00401000
12	12	100401200	C00401200
14	14	100401400	–
16	16	–	C00401600

### ● Stem Elbow (Equal)



O/D Tube	O/D Stem	Pneufit	Pneufit C
4	4	100430400	C00430400
6	6	100430600	C00430600
8	8	100430800	C00430800
10	10	–	C00431000
12	12	–	C00431200
16	16	–	C00431600

### ● 90° Swivel Elbow Adaptor - Parallel



Metric & BSPP Thread	O/D Tube	Pneufit	Pneufit C
M5	4	102470405	C02470405
M5	6	102470605	C02470605
G1/8	4	102470418	C02470418
G1/8	6	102470618	C02470618
G1/8	8	102470818	C02470818
G1/8	10	102471018	C02471018
G1/4	4	102470428	C02470428
G1/4	6	102470628	C02470628
G1/4	8	102470828	C02470828
G1/4	10	102471028	C02471028
G1/4	12	–	C02471228
G3/8	4	–	C02470438
G3/8	6	–	C02470638
G3/8	8	102470838	C02470838
G3/8	10	102471038	C02471038
G3/8	12	102471238	C02471238
G3/8	14	102471438	–
G3/8	16	–	C02471638
G1/2	8	–	C02470848
G1/2	10	–	C02471048
G1/2	12	102471248	C02471248
G1/2	14	102471448	–
G1/2	16	–	C02471648

### ● 90° Swivel Elbow Adaptor - Taper



BSPT Thread	O/D Tube	Pneufit	Pneufit C
R1/8	4	101470418	C01470418
R1/8	6	101470618	C01470618
R1/8	8	101470818	C01470818
R1/8	10	101471018	C01471018
R1/8	12	–	C01471218
R1/4	4	101470428	C01470428
R1/4	6	101470628	C01470628
R1/4	8	101470828	C01470828
R1/4	10	101471028	C01471028
R1/4	12	–	C01471228
R3/8	4	–	C01470438
R3/8	6	–	C01470638
R3/8	8	101470838	C01470838
R3/8	10	101471038	C01471038
R3/8	12	101471238	C01471238
R3/8	16	–	C01471638
R1/2	6	–	C01470648
R1/2	8	101470848	C01470848
R1/2	10	101471048	C01471048
R1/2	12	101471248	C01471248
R1/2	16	–	C01471648

### ● Bulkhead Swivel Elbow Connector



O/D Tube	Bulkhead thread	Pneufit C
4	M12 x1,0	C00490400
6	M14x1,0	C00490600
8	M16 x 1	C00490800
10	M20 x 1	C00491000
12	M22 x 1	C00491200

### ● 45° Swivel Adaptor - Parallel



BSPP Thread	O/D Stem	Pneufit
G1/8	6	102570618
G1/8	8	102570818
G1/4	6	102570628
G1/4	8	102570828

## PUSH-IN FITTINGS

Y connectors

### ● Union Y (Equal)



O/D Tube	Pneufit	Pneufit C
4	100820400	C00820400
6	100820600	C00820600
8	100820800	C00820800
10	100821000	C00821000
12	-	C00821200

### ● Union Y (Unequal)



O/D Tube	O/D Tube	Pneufit C
4	6	C00820604
4	8	C00820804
6	8	C00820806
6	10	C00821006
8	10	C00821008
8	12	C00821208
10	12	C00821210

### ● Swivel Y Adaptor - Parallel



Metric & BSPP Thread	O/D Tube	Pneufit C
M5	4	C02880405
M5	6	C02880605
G1/8	4	C02880418
G1/8	6	C02880618
G1/8	8	C02880818
G1/8	10	C02881018
G1/4	4	C02880428
G1/4	6	C02880628
G1/4	8	C02880828
G1/4	10	C02881028
G1/4	12	C02881228
G3/8	4	C02880438
G3/8	6	C02880638
G3/8	8	C02880838
G3/8	12	C02881238
G1/2	6	C02880648
G1/2	8	C02880848
G1/2	10	C02881048
G1/2	12	C02881248

### ● Swivel Y Adaptor - Taper



BSPT Thread	O/D Tube	Pneufit C
R1/8	4	C01880418
R1/8	6	C01880618
R1/8	8	C01880818
R1/8	10	C01881018
R1/4	4	C01880428
R1/4	6	C01880628
R1/4	8	C01880828
R1/4	10	C01881028
R3/8	4	C01880438
R3/8	6	C01880638
R3/8	8	C01880838
R3/8	10	C01881038
R1/2	6	C01880648
R1/2	8	C01880848
R1/2	10	C01881048

### ● Stem Y (Equal)



O/D Stem	O/D Tube	Pneufit C
4	4	C00840400
6	6	C00840600
8	8	C00840800
10	10	C00841000
12	12	C00841200

### ● Stem Y (Unequal)



O/D Stem	O/D Tube	Pneufit C
6	4	C00840604
8	6	C00840806
10	8	C00841008
12	10	C00841210



## PUSH-IN FITTINGS

Tee adaptors and connectors

### ● Union Tee (Equal)



O/D Tube	Pneufit	Pneufit C
4	100600400	C00600400
6	100600600	C00600600
8	100600800	C00600800
10	100601000	C00601000
12	100601200	C00601200
14	100601400	-
16	-	C00601600

### ● Union Tee (Unequal)



O/D Tube	O/D Tube	Pneufit C
4	6	C006A0604
6	8	C006A0806
6	10	C006A1006
8	10	C006A1008
8	12	C006A1208
10	12	C006A1210
10	16	C006A1610
12	16	C006A1612

### ● Swivel Tee Adaptor - Parallel



Metric & BSPP Thread	O/D Tube	Pneufit	Pneufit C
M5	4	-	C02670405
M5	6	-	C02670605
G1/8	4	102670418	C02670418
G1/8	6	102670618	C02670618
G1/8	8	102670818	C02670818
G1/8	10	-	C02671018
G1/4	4	-	C02670428
G1/4	6	102670628	C02670628
G1/4	8	102670828	C02670828
G1/4	10	102671028	C02671028
G1/4	12	-	C02671228
G3/8	4	-	C02670438
G3/8	6	-	C02670638
G3/8	8	102670838	C02670838
G3/8	10	102671038	C02671038
G3/8	12	102671238	C02671238
G3/8	14	102671438	-
G3/8	16	-	C02671638
G1/2	8	-	C02670848
G1/2	10	-	C02671048
G1/2	12	-	C02671248
G1/2	14	102671448	-
G1/2	16	-	C02671648

### ● Swivel Tee Adaptor - Taper



BSPT Thread	O/D Tube	Pneufit	Pneufit C
R1/8	4	101670418	C01670418
R1/8	6	101670618	C01670618
R1/8	8	101670818	C01670818
R1/8	10	-	C01671018
R1/8	12	-	C01671218
R1/4	4	101670428	C01670428
R1/4	6	101670628	C01670628
R1/4	8	101670828	C01670828
R1/4	10	101671028	C01671028
R1/4	12	-	C01671228
R3/8	4	-	C01670438
R3/8	6	-	C01670638
R3/8	8	101670838	C01670838
R3/8	10	101671038	C01671038
R3/8	12	101671238	C01671238
R1/2	6	-	C01670648
R1/2	8	-	C01670848
R1/2	10	101671048	C01671048
R1/2	12	101671248	C01671248

### ● Stem Tee (Equal)



O/D Stem	O/D Tube	Pneufit C
4	4	C00630400
6	6	C00630600
8	8	C00630800
10	10	C00631000
12	12	C00631200

### ● Stem Tee (Unequal)



O/D Stem	O/D Tube	Pneufit C
6	4	C00630604
8	6	C00630806
10	8	C00631008
12	10	C00631210

## PUSH-IN FITTINGS

Banjo flow controler and banjo accessories

### ● Banjo Flow Control - Parallel (Regulating Out)



Metric & BSPP Thread	O/D Tube	Pneufit	Pneufit C
M5	4	-	COK510405
M5	6	-	COK510605
G1/8	4	10K510418	COK510418
G1/8	6	10K510618	COK510618
G1/8	8	10K510818	COK510818
G1/4	4	-	COK510428
G1/4	6	10K510628	COK510628
G1/4	8	10K510828	COK510828
G1/4	10	10K511028	COK511028
G1/4	12	-	COK511228
G3/8	6	-	COK510638
G3/8	8	10K510838	COK510838
G3/8	10	10K511038	COK511038
G3/8	12	10K511238	COK511238
G1/2	8	-	COK510848
G1/2	10	-	COK511048
G1/2	12	10K511248	COK511248

### ● Banjo Flow Control - Taper (Regulating Out)



BSPT Thread	O/D Tube	Pneufit C
R1/8	4	COTA00418
R1/8	6	COTA00618
R1/8	8	COTA00818
R1/4	4	COTA00428
R1/4	6	COTA00628
R1/4	8	COTA00828
R1/4	10	COTA01028
R1/4	12	COTA01228
R3/8	6	COTA00638
R3/8	8	COTA00838
R3/8	10	COTA01038
R3/8	12	COTA01238
R1/2	10	COTA01048
R1/2	12	COTA01248

\* Pressure rating on this item 10 bar.

### ● Banjo Flow Control - Parallel (Regulating In)



Metric & BSPP Thread	O/D Tube	Pneufit C
M5	4	COL510405
M5	6	COL510605
G1/8	4	COL510418
G1/8	6	COL510618
G1/8	8	COL510818
G1/4	4	COL510428
G1/4	6	COL510628
G1/4	8	COL510828
G1/4	10	COL511028
G3/8	8	COL510838
G3/8	10	COL511038
G3/8	12	COL511238
G1/2	10	COL511048
G1/2	12	COL511248

### ● Banjo Flow Control - Taper (Regulating In)



BSPT Thread	O/D Tube	Pneufit C
R1/8	4	COSA00418
R1/8	8	COSA00618
R1/4	4	COSA00428
R1/4	6	COSA00628
R1/4	8	COSA00828
R3/8	6	COSA00638
R3/8	8	COSA00838
R3/8	10	COSA01038
R3/8	12	COSA01238
R1/2	8	COSA00848
R1/2	10	COSA01048
R1/2	12	COSA01248

### ● Shrouded Banjo (Regulating Out - Parallel)



Metric & BSPP Thread	O/D Tube	Pneufit C
M5	4	COKB00405
M5	6	COKB00605
G1/8	4	COKB00418
G1/8	6	COKB00618
G1/8	8	COKB00818
G1/4	4	COKB00428
G1/4	6	COKB00628
G1/4	8	COKB00828
G1/4	10	COKB01028
G1/4	12	COKB01228
G3/8	6	COKB00638
G3/8	8	COKB00838
G3/8	10	COKB01038
G3/8	12	COKB01238
G1/2	8	COKB00848
G1/2	10	COKB01048
G1/2	12	COKB01248

### ● Elbow Banjo Assembly (Non-Regulating Bolt - Parallel)



Metric & BSPP Thread	O/D Tube	Pneufit	Pneufit C
M5	4	-	COA510405
M5	6	-	COA510605
G1/8	4	10A510418	COA510418
G1/8	6	10A510618	COA510618
G1/8	8	10A510818	COA510818
G1/4	4	-	COA510428
G1/4	6	10A510628	COA510628
G1/4	8	10A510828	COA510828
G1/4	10	10A511028	COA511028
G3/8	6	-	COA510638
G3/8	8	10A510838	COA510838
G3/8	10	10A511038	COA511038
G3/8	12	-	COA511238
G1/2	8	-	COA510848
G1/2	10	-	COA511048
G1/2	12	-	COA511248

## PUSH-IN FITTINGS

Cross, manifolds and shut off valves

### ● Manifold Union



Pneufit C	
O/D Tube Outlet	O/D Tube Inlet
4	6
4	8
6	8
6	10
8	10

### ● Union Cross



Pneufit C	
O/D Tube	
4	C00900400
6	C00900600
8	C00900800
10	C00901000
12	C00901200

### ● 3/2 Shut off valves (Taper Male)



Pneufit C	
BSPT Thread	
R1/8	C01GG1818
R1/4	C01GG2828
R3/8	C01GG3838
R1/2	C01GG4848

### ● 3/2 Shut off valves (Tube/Taper Male)



Pneufit C		
BSPT Thread	O/D Tube	
R1/8	6	C01GH0618
R1/8	8	C01GH0818
R1/4	6	C01GH0628
R1/4	8	C01GH0828
R1/4	10	C01GH1028
R1/4	12	C01GH1228
R3/8	6	C01GH0638
R3/8	8	C01GH0838
R3/8	10	C01GH1038
R3/8	12	C01GH1238
R1/2	10	C01GH1048
R1/2	12	C01GH1248

### ● 3/2 Shut off valves (Tube/Tube)



Pneufit C	
O/D Tube	
6	C00GF0600
8	C00GF0800
10	C00GF1000
12	C00GF1200

### ● 3/2 Shut off valves (Taper Male/Tube)



Pneufit C		
BSPT Thread	O/D Tube	
R1/8	6	C01GJ0618
R1/8	8	C01GJ0818
R1/4	6	C01GJ0628
R1/4	8	C01GJ0828
R1/4	10	C01GJ1028
R1/4	12	C01GJ1228
R3/8	6	C01GJ0638
R3/8	8	C01GJ0838
R3/8	10	C01GJ1038
R3/8	12	C01GJ1238
R1/2	10	C01GJ1048
R1/2	12	C01GJ1248



Large variety  
of fittings

Clear lid holds  
fittings in place



## Pneufit C Selection Box

**We know that many of our customers use a wide range of fittings, and if they have an emergency, valuable time is wasted looking for a replacement.**

Solve this problem by ordering our selection boxes for immediate use when required. Four kits available covering popular tube sizes:

- > Up to 360 items in each kit – straight connectors, elbows, tees, tube connectors, plugs
- > Includes handy tube cutter ensuring perfect joint
- > Strong moulded carry case
- > Contents identified for easy re-ordering

Model	Type
NE/11152	4 & 6 mm fittings kit
NE/11154	6 & 8 mm fittings kit
NE/11433	8 & 10 mm fittings kit
NE/11376	10 & 12 mm fittings kit

Engineering  
**GREAT** Solutions



Find out more  
[www.imi-precision.com](http://www.imi-precision.com)



# BSP & HOSE FITTINGS

M5, 1/8" ... 1" BSP

- Bright nickel plated
- Corrosion resistant
- Compact design
- Washers included where necessary

## Technical Data

**Medium:**  
Compressed air or any fluids compatible with the materials listed opposite.

**Operating pressure:**  
Generally limited by tubing specification, except non regulating banjo bolts (max 18 bar) and regulating banjo bolts (max 10 bar) due to sealing washer.

**Ambient temperature:**  
Generally limited by tubing specification except where plastic sealing washers are used (banjo bolts, and M5 units). In these cases temperature is limited to +70°C.

## Materials

Brass type OT UNI EN 12164/5 CW614/7N and undergo a nickel-plating process

**Sealing washers:**  
Copper (Acetal for M5 items)



### ● Sleeve Adaptor (Parallel Threads)



Metric & BSPP Thread	Metric & BSPP Thread	Model
M5	M5	160220505
G1/8	M5	160221805
G1/8	G1/8	160221818
G1/4	G1/8	160222818
G1/4	G1/4	160222828
G3/8	G1/8	160223818
G3/8	G1/4	160223828
G3/8	G3/8	160223838
G1/2	G1/8	160224818
G1/2	G1/4	160224828
G1/2	G3/8	160224838
G1/2	G1/2	160224848
G3/4	G1/2	160226848
G3/4	G3/4	160226868
G1	G3/4	160228868
G1	G1	160228888

### ● Reducing Connector



Reducing Male BSPT	Female BSPP	Model
R1/8	G1/8	150231818
R1/4	G1/8	150232818
R1/4	G1/4	150232828
R3/8	G1/8	150233818
R3/8	G1/4	150233828
R3/8	G3/8	150233838
R1/2	G1/8	150234818
R1/2	G1/4	150234828
R1/2	G3/8	150234838
R1/2	G1/2	150234848
R3/4	G1/4	150236828
R3/4	G3/8	150236838
R3/4	G1/2	150236848
R1	G1/2	150238848
R1	G3/4	150238868

### ● Reducing Connector (Parallel)



Reducing Male BSPP	Female and BSPP Thread	Model
G1/8	M5	160231805
G1/4	G1/8	160232818
G3/8	G1/8	160233818
G3/8	G1/4	160233828
G1/2	G1/8	160234818
G1/2	G1/4	160234828
G1/2	G3/8	160234838
G3/4	G1/4	160236828
G3/4	G3/8	160236838
G3/4	G1/2	160236848

### ● Bulkhead Connector



Metric & BSPP Thread	Male Metric Thread	Model
M5	M10x1,0	160290005
G1/8	M16x1,5	160290018
G1/4	M20x1,5	160290028
G3/8	M26x1,5	160290038
G1/2	M28x1,5	160290048
G3/4	M33x1,5	160290068
G1	M42x1,5	160290088

Supplied with locknut.

## BSP & HOSE FITTINGS

M5, 1/8" ... 1" BSP

### ● Expanding Connector (Parallel)



Metric & BSPP Thread	Female BSPP	Model
M5	G1/8	160230518
G1/8	G1/4	160231828
G1/8	G3/8	160231838
G1/4	G3/8	160232838
G1/4	G1/2	160232848
G3/8	G1/2	160233848
G1/2	G3/4	160234868

Supplied with sealing washer.

### ● Expanding Connector (Taper)



Expanding		
Male BSPT	Female BSPP	Model
R1/8	G1/4	150231828
R1/8	G3/8	150231838
R1/8	G1/2	150231848
R1/4	G3/8	150232838
R1/4	G1/2	150232848
R3/8	G1/2	150233848
R3/8	G3/4	150233868
R1/2	G3/4	150234868
R3/4	G1	150236888

### ● Nipple Adaptor (Parallel Threads)



Metric & BSPP Thread	Metric & BSPP Thread	Model
G1/8	G1/8	160201818
G1/4	G1/8	160202818
G1/4	G1/4	160202828
G3/8	G1/4	160203828
G3/8	G3/8	160203838
G1/2	G1/4	160204828
G1/2	G3/8	160204838
G1/2	G1/2	160204848
G3/4	G1/2	160206848
G3/4	G3/4	160206868
G1	G3/4	160208868
G1	G1	160208888

Supplied with sealing washer.

### ● Nipple Adaptor (Taper Threads)



BSPT Thread	BSPT Thread	Model
R1/4	R1/8	150202818
R1/4	R1/4	150202828
R3/8	R1/8	150203818
R3/8	R1/4	150203828
R3/8	R3/8	150203838
R1/2	R1/8	150204818
R1/2	R1/4	150204828
R1/2	R3/8	150204838
R1/2	R1/2	150204848
R3/4	R1/2	150206848
R3/4	R3/4	150206868
R1	R3/4	150208868
R1	R1	150208888

### ● Elbow Connector (Parallel Threads)



Female BSPP	Model
G1/8	160420018
G1/4	160420028
G3/8	160420038
G1/2	160420048
G3/4	160420068

### ● Plug (Parallel Threads)



Metric & BSPP Threads	Model
M5	160050005
G1/8	160050018
G1/4	160050028
G3/8	160050038
G1/2	160050048
G3/4	160050068
G1	160050088

Supplied with sealing washers.

## BSP & HOSE FITTINGS

M5, 1/8" ... 1" BSP



### ● Tee Connector

Male BSPT	Female BSPP	Model
R1/8	G1/8	150690018
R1/4	G1/4	150690028
R3/8	G3/8	150690038
R1/2	G1/2	150690048



### ● Elbow Connector

Male BSPT	Female BSPP	Model
R1/8	G1/8	150430018
R1/4	G1/4	150430028
R3/8	G3/8	150430038
R1/2	G1/2	150430048
R3/4	G3/4	150430068



### ● Tee Connector (Parallel Threads)

Female BSPP	Model
G1/8	160620018
G1/4	160620028
G3/8	160620038
G1/2	160620048
G3/4	160620068



### ● Hose Adaptor (Parallel Threads)

Hose Bore mm	BSPP Thread	Model
3	M5	292170305
4	G1/8	292170418
6	G1/8	292170618
6	G1/4	292170628
9	G1/8	292170918
9	G1/4	292170928
9	G3/8	292170938
9	G1/2	292170948
19	G3/4	292171968

Supplied with sealing washer.



### ● Hose Adaptor (Taper Threads)

Hose Bore mm	BSPT Thread	Model
7	R1/8	291170718
7	R1/4	291170728
7	R3/8	291170738
8	R1/4	291170828
8	R3/8	291170838
10	R1/4	291171028
10	R3/8	291171038
12	R3/8	291171238
16	R3/8	291171638
16	R1/2	291171648
25	R3/4	291172568
25	R1	291172588

### ● Elbow Banjo Assembly Non-Regulating (Parallel Threads)



Male BSPP	Female BSPP	Model
G1/8	G1/8	16A511818
G1/4	G1/4	16A512828
G3/8	G3/8	16A513838
G1/2	G1/2	16A514848

Female parallel BSP thread to male parallel BSP thread.

### ● Elbow Banjo Assembly Regulating Out (Parallel Threads)



Male BSPP	Female BSPP	Model
G1/8	G1/8	16K511818
G1/4	G1/4	16K512828
G3/8	G3/8	16K513838
G1/2	G1/2	16K514848

Arrow on bolt hexagon indicates free flow direction.  
Pressure range 1 ... 10 bar.

# TUBING & HOSES

Ø 4 ... 16 mm O/D

- Available in a range of colours for ease of identification
- In addition to general industrial applications Nylon is suitable for use on air braking systems of commercial vehicles and conforms to DIN 74324. (Applicable sizes; 6, 8, 10, 12, 16 mm O/D)
- 25 metre lengths supplied in cartons providing good protection and easy storage
- Polyurethane offers excellent mechanical properties and industry leading flexibility

## Technical Data

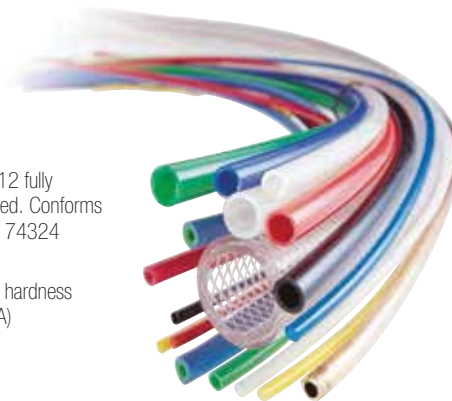
**Medium:**  
Compressed air. Consult our Technical Service for use with other fluids.

**Operating pressure:**  
See table below

## Materials

**Nylon tube:**  
Nylon (polyamide) type PA12 fully plasticised and light stabilised. Conforms to material standard of DIN 74324

**Polyurethane tube:**  
Is light stabilised and has a hardness of Shore D 52 (98 Shore A)



### ● Maximum operating pressures and bend radii

O/D mm		4	6	8	10	12	14	16
Max. pressure (bar)* at -40°C ... +20°C	Nylon	31	27	19	19	19	16	19
	Polyurethane	10	9	9	9	9	–	–
Min. bend radius mm	Nylon	25	30	40	60	60	80	95
	Polyurethane	6	9	16	17	25	–	–

Maximum continuous working temperature: nylon +80°C, polyurethane +60°C.

\* Multiply by factors in table below for use at higher temperatures.

### ● Operating pressure/temperature conversion factors

Working temperature	Factor (Nylon)	Factor (Polyurethane)
-40°C ... +20°C	1	1
+30°C	0,83	0,85
+40°C	0,75	0,7
+50°C	0,64	0,6
+60°C	0,57	0,5
+80°C	0,47	–

To calculate working pressures at various temperatures, multiply working pressure at -40°C ... +20°C by factor given in table.

Maximum continuous working temperature: Nylon +80°C, Polyurethane +60°C.

### ● Tube sizes (metric)

O/D mm	4	6	8	10	12	14	16
Nylon	•	•	•	•	•	•	•
Polyurethane	•	•	•	•	•	–	–



## PRODUCT LINKS

Perfect for use with blow gun installations...

For blow gun range see page 208

For preset regulator R16 see the air preparation section





## TUBING & HOSES

Ø 4 ... 16 mm O/D



### ● Nylon tube

Colour	Length (m)	O/D I/D tube						
		4/2,5*	6/4	8/6	10/7,5	12/9	14/11*	16/12
Natural	25	PA2-0004025C	PA2-0006025C	PA2-0008025C	PA2-0010025C	PA2-0012025C	PA2-0014025C	PA2-0016025C
Red	25	PA2-0104025C	PA2-0106025C	PA2-0108025C	PA2-0110025C	PA2-0112025C	–	–
Yellow	25	PA2-0304025C	PA2-0306025C	PA2-0308025C	PA2-0310025C	PA2-0312025C	–	–
Blue	25	PA2-0504025C	PA2-0506025C	PA2-0508025C	PA2-0510025C	PA2-0512025C	PA2-0514025C	PA2-0516025C
Black	25	PA2-0704025C	PA2-0706025C	PA2-0708025C	PA2-0710025C	PA2-0712025C	PA2-0714025C	PA2-0716025C

Note: 'C' at last digit in part number indicates packed in a box/carton.  
\* Tube size does not conform to DIN 74324.



### ● Polyurethane tube

Colour	Length (m)	O/D I/D tube				
		4/2,5	6/4	8/5,5	10/7	12/8
Natural	25	PU2-0004025C	PU2-0006025C	PU2-0008025C	PU2-0010025C	PU2-0012025C
Red	25	PU2-0104025C	PU2-0106025C	PU2-0108025C	PU2-0110025C	PU2-0112025C
Yellow	25	PU2-0304025C	PU2-0306025C	PU2-0308025C	PU2-0310025C	PU2-0312025C
Blue	25	PU2-0504025C	PU2-0506025C	PU2-0508025C	PU2-0510025C	PU2-0512025C
Black	25	PU2-0704025C	PU2-0706025C	PU2-0708025C	PU2-0710025C	PU2-0712025C

Note: 'C' at last digit in part number indicates packed in a box/carton.



### ● Pneuflex Tubing

Model	O/D tube	Adaptor (thread)	Length of closed spiral	Working length (mm)	Operating pressure (bar)
PU310600218	6	R1/8	165	2000	10
PU310800228	8	R1/4	180	2000	10
PU310800428	8	R1/4	400	4000	10

### ● Tube cutter



Model	Type
M/3314	Cutter

For use on nylon and polyurethane tubing 4 ... 16 mm.

### ● Tubing channels



Model	O/D Tube	No. of channels
100HA0600	6	10
100HA0800	8	10

# SILENCERS

## ● POROUS PLASTIC SILENCERS

M/S



- Reduce the noise levels of pneumatic equipment
- Compact, efficient and lightweight
- Operating pressure is -1 ... 10 bar
- Operating temperature is -20°C ... +80°C

### Technical Data

**Medium:**

Compressed air, filtered 50 µm, lubricated and non lubricated/vacuum, inert gases

**Operating pressure:**

-1 ... 10 bar maximum (vacuum service)

**Media temperature:**

-20°C ... +80°C

Air supply must be dry enough to avoid ice formation at temperatures below +2°C

### Materials

**Body:**

UHMW PE porous plastic

**Connector base:**

PE (black)

## ● SINTERED BRONZE SILENCERS

T40



- Reduce the noise levels of pneumatic equipment
- Compact and efficient
- Operating pressure is 10 bar max.
- Operating temperature is -20°C ... +80°C

### Technical Data

**Medium:**

Compressed air, filtered, lubricated or non lubricated, vacuum, Inert gases

**Operating pressure:**

10 bar maximum

**Media temperature:**

-20°C ... +80°C

Air supply must be dry enough to avoid ice formation at temperatures below +2°C

### Materials

**Body:**

Brass

**Element:**

Sintered bronze

## ● EXHAUST FILTERS

M/1500 series



- Prevent the ingress of dirt with minimal flow restriction
- Robust and compact
- Operating pressure is 10 bar max.
- Operating temperature is -20°C ... +80°C

### Technical Data

**Medium:**

Compressed air, filtered, lubricated or non-lubricated, inert gases

**Operating pressure:**

10 bar max.

**Media temperature:**

-20°C ... +80°C

Air supply must be dry enough to avoid ice formation at temperatures below +2°C

### Materials

**Body:**

Aluminium alloy

**Element:**

Sintered bronze

# SILENCERS

## ● QUIETAIRE HEAVY DUTY SILENCERS

MB Series



- Reduce the noise levels of pneumatic equipment
- Prevent open line exhaust dangers
- Corrosion resistant
- High flow capacity with low back pressure
- Brass mesh screen and aluminium construction provide improved flow, longer life and cleanable element
- Prevent metal chips, abrasive grits, dust and other contaminants from entering open exhaust ports

## Technical Data

### Medium:

Compressed air, filtered, lubricated and non-lubricated, inert gases

### Operating pressure:

-1 ... 20 bar

### Ambient temperature:

-20°C ... +80°C

### Operation:

Exhaust silencer

### Mounting:

Directly in the exhaust port

## Materials

Aluminium body and shell, brass mesh element

## ● Standard silencers



	Porous Plastic	Sintered Bronze	Exhaust Filter	Quietaire
<b>Male Thread</b>				
M5	M/S0	T40M0500	–	–
G1/8	M/S1	T40C1800	M/1511	–
R1/8	–	T40B1800	–	MB001B
G1/4	M/S2	T40C2800	M/1512	–
R1/4	–	T40B2800	–	MB002B
G3/8	M/S3	T40C3800	–	–
R3/8	–	T40B3800	–	MB003B
G1/2	M/S4	T40C4800	M/1514	–
R1/2	–	T40B4800	–	MB004B
G3/4	M/S6	T40C6800	M/1516	–
R3/4	–	T40B6800	–	MB006B
G1	M/S8	T40C8800	M/1518	–
R1	–	T40B8800	–	MB008B

# QUICK RELEASE COUPLINGS

## 238 Series

- Single shut off: The hose connection (plug) has a through bore whilst the upstream coupling shuts off immediately when the connection is broken. The ideal solution for simple air tools or similar
- Single handed operation
- European standard industrial coupling
- High flow rate, low pressure drop
- Industrial standard profile

### Technical Data

**Operating pressure:**  
0 ... 35 bar

**Working temperature:**  
-20°C ... +100°C  
Air supply must be dry enough to avoid ice formation at temperatures below +2°C

**Air flow:**  
1000 l/min (input pressure 6 bar, pressure drop 0,5 bar)

### Materials

**Coupling:**

**Body & Sleeve:**  
Nickel plated brass

**Valve:**  
Brass

**Spring & Locking ring/balls:**  
Stainless steel

**Seals:**  
NBR

**Body:**  
Nickel plated brass



### ● Coupling with BSPP male thread



Type	B	Model
Coupling Male Thread	G1/4	238210028
Coupling Male Thread	G3/8	238210038
Coupling Male Thread	G1/2	238210048

### ● Plug with BSPP male thread



Type	B	Model
Plug Male Thread	G1/4	238110028
Plug Male Thread	G3/8	238110038
Plug Male Thread	G1/2	238110048

### ● Coupling with BSPP female thread



Type	B	Model
Coupling Female Thread	G1/4	238220028
Coupling Female Thread	G1/2	238220048

### ● Plug with BSPP female thread



Type	B	Model
Plug Female Thread	G1/4	238120028
Plug Female Thread	G3/8	238120038
Plug Female Thread	G1/2	238120048

### ● Coupling with metric hose tail



Type	Hose Bore Ø A	Model
Coupling Hose Barb	6	238230600
Coupling Hose Barb	9	238230900
Coupling Hose Barb	13	238231300

### ● Plug with metric hose tail



Type	Hose Bore Ø A	Model
Plug Hose Barb	6	238130600
Plug Hose Barb	9	238130900
Plug Hose Barb	13	238131300

# BALL VALVES

60 Series Brass 1/8" ... 1 1/2" BSP

- Precision engineered shut-off valves
- Minimum resistance to fluid flow
- Positive quick open/shut action
- Flow in either direction (except exhaust type)

## Technical Data

**Medium:**  
Compressed air, inert gases, water, depending upon valve seat material

**Operating pressure:**  
Refer to tables

**Ambient temperature:**  
Refer to tables

## Materials

**60 Series:**  
Nickel plated brass to UNI-5705-65, chromium plated brass, zinc plated steel, PTFE seats and nitrile or Fkm rubber seals



### ● Standard full bore



Model	Female (B)	Maximum pressure (bar)
602112128	Rp1/4	40
602112138	Rp3/8	40
602112148	Rp1/2	40
602112168	Rp3/4	40
602112188	Rp1	40
6021121A8	Rp1 1/4	40
6021121B8	Rp1 1/2	40
6021121C8	Rp2	40

PTFE seats, HNBR seals Operating temperature: -15°C ... +90°C.

### ● Exhausting full bore



Model	Female (B)	Maximum pressure (bar)
602113128EX	G1/4	12
602113138EX	G3/8	12
602113148EX	G1/2	12
602113168EX	G3/4	12
602113188EX	G1	12

PTFE seats, nitrile seals Operating temperature: 0°C ... +60°C.

### ● Lockable Exhausting full bore



Model	Female (B)	Maximum pressure (bar)
601812128	G1/4	13,6
601812138	G3/8	13,6
601812148	G1/2	13,6
601812168	G3/4	13,6
601812188	G1	13,6

Note: lever lockable only in closed position Standard handle accepts Ø 7 mm shackle.  
Operating Temperature -10°C ... +100°C.

### ● Mini Reduced bore



Model	Female (B)	Maximum pressure (bar)
601112118	G1/8	10
601112128	G1/4	10
601112138	G3/8	10
601112148	G1/2	10

Model	Female/ Male (B)	Maximum pressure (bar)
601112218	G1/8	10
601112228	G1/4	10
601112238	G3/8	10
601112248	G1/2	10

PTFE seats, nitrile seals Operating temperature: -10°C ... +90°C.

# MANUALLY ACTUATED SLEEVE VALVE

M/7300 3/2, G1/8 ... G1/2

- Sliding sleeve operation
- Very compact in-line units Easy to install
- Very simple and reliable operation 3/2 function

## Technical Data

**Medium:**  
Compressed air, filtered,  
lubricated and non-lubricated

**Operation:**  
Sleeve valve, directly actuated,  
with open exhaust

**Operating pressure:**  
10 bar max.

**Mounting:**  
Concentrically directly in the pipework

**Ambient temperature:**  
-20°C ... +80°C max.  
Air supply must be dry enough to avoid ice  
formation at temperatures below +2°C

## Materials

**Body:**  
Chrome-nickel plated brass

**Sleeve:**  
Grey anodised aluminium

**Seals:**  
NBR



## Models

Model	Port size	Flow 1 » 2 at 6 » 5 bar (NI/min)
M/7318	G1/8	376
M/7328	G1/4	775
M/7338	G3/8	1590
M/7348	G1/2	3025

# BLOW GUNS

## BG Series

### BG4000:

- Bright chrome finish
- Cushioned corporate vinyl thumb grip
- Exhausts air when nozzle is blocked
- Complies with O.S.H.A.

### BG5000:

- One piece design in moulded high impact plastic
- Exhausts air when nozzle is blocked
- Complies with O.S.H.A.

## Technical Data

**Medium:**  
Non-lubricated compressed air, filtered

**Connection:**  
G1/4 (BG4000 and BG5000)

**Operating pressure:**  
10 bar maximum line pressure  
The USA O.S.H.A. recommendations state that nozzle pressures should not exceed 2 bar. This ensures that the blocked end condition pressure will not exceed the 0,4 bar that could penetrate human skin with possibly fatal consequences. Blow guns should always be supplied through a suitable pressure regulator to ensure safe operation

## Materials

**Body:**  
BG4000: brass bright chrome finish  
BG5000: one piece design in moulded high impact plastic



## Models

Model	Port size	Description
BG4000	G1/4	Metal Blow Gun
BG5000	G1/4	Plastic Blow Gun



## PRODUCT LINKS

### Have you seen...

We also have 3/2 shut off valves complete with push in fittings and/or BSP threads  
See Pneufit C series in this section



# BLOCK FORM FLOW REGULATORS

T1000 and T1100 Uni-directional (T1000) – M5, G1/8 ... G1/2 Bi-directional (T1100) – G1/8 ... G1/4

- Compact size/low weight/ in-line units
- High flow performance
- Suitable for panel and wall mounting
- Two way flow control (T1100 series)
- Adjustment can be locked
- Captive regulator needle will not blow out when unscrewed
- Adjusting knob position line

## Technical Data

**Medium:**  
Compressed air, filtered, lubricated or non-lubricated, inert gases

**Operating pressure:**  
1 ... 10 bar (T1000 series G1/8 ... G1/2)  
0,3 ... 10 bar (T1000 series M5)  
0 ... 10 bar (T1100 series)

**Ambient temperature:**  
-20°C ... +80°C  
Air supply must be dry enough to avoid ice formation at temperatures below +2°C

## Materials

**Body:**  
Aluminium alloy

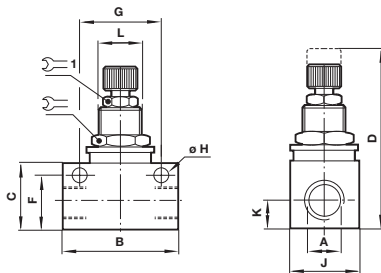
**Seals:**  
Nitrile

**Needle and internal parts:**  
Brass

**External parts:**  
Aluminium alloy



## Dimensions



Model	A	B	C	D	F	G	ØH	J	K	L	⌀
T1000M0500	M5	25	15	45	12	18	4,5	12	5,5	M10 x 0,75	12
T1000C1800	G1/8	34	20	51	16,5	24	4,5	16	8	M12 x 1	14
T1000C2800	G1/4	45	25,5	61,5	21	32	4,5	19	9,5	M14 x 1	17
T1000C3800	G3/8	58	32,5	78,5	27	43	4,5	28	13	M20 x 1	24
T1000C4800	G1/2	65	36	82	30,5	50	4,5	30	15	M20 x 1	24
T1100C1800	G1/8	34	20	51	16,5	24	4,5	16	8	M12 x 1	14
T1100C2800	G1/4	45	25,4	61,5	20,8	32	4,5	19	9,5	M12 x 1	17

## Models

Model	Port size	Max. regulated flow factor		Free flow factor		Opening pressure (bar)	Minimum operating pressure (bar)
		C*	CV	C*	CV		
T1000M0500	M5	0,28	0,07	0,28	0,07	0,3	0,3
T1000C1800	G1/8	0,57	0,14	1,50	0,37	< 0,1	1
T1000C2800	G1/4	1,30	0,32	2,80	0,69	< 0,1	1
T1000C3800	G3/8	4,80	1,17	6,70	1,64	< 0,1	1
T1000C4800	G1/2	7,50	1,84	8,30	2,00	< 0,1	1
T1100C1800	G1/8	0,57	0,14	–	–	–	0
T1100C2800	G1/4	1,30	0,32	–	–	–	0

\* C: measured in dm<sup>3</sup>/(s.bar).

# EXHAUST FLOW REGULATOR/SILENCERS

T20 M5, G1/8 ... G1/2

- Compact, integral flow regulator and silencer units
- Captive regulating needle will not blow out when unscrewed
- Reduced dimensions

## Technical Data

**Medium:**  
Compressed air, filtered, lubricated and non-lubricated, inert gases

**Operating pressure:**  
1 ... 10 bar

**Ambient temperature:**  
-20°C ... +80°C  
Air supply must be dry enough to avoid ice formation at temperatures below +2°C

## Materials

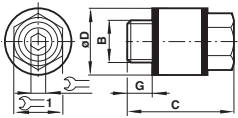
**Body and washer:**  
Nylon

**Silencer:**  
Porous polyethylene

**Adjusting screw:**  
High tensile zinc electroplated steel



## Dimensions



Model	B	C	G	Ø D	⌀	1
T20M0500	M5	16	5	–	1,5	8
T20C1800	G1/8	20,5	6	15	2,5	13
T20C2800	G1/4	29	7	18	4	15
T20C3800	G3/8	38	8	24	6	20
T20C4800	G1/2	50	10	30	8	25

## Models

Model	Thread	Port size	Max. regulated flow factor	
			C**	CV



T20M0500	Metric	M5	0,3	0,07
T20C1800	BSPP	1/8	1,6	0,4
T20C2800	BSPP	1/4	3,2	0,8
T20C3800	BSPP	3/8	6,9	1,7
T20C4800	BSPP	1/2	10	2,4

\*\* C measured in dm<sup>3</sup>/(s.bar).



# NON-RETURN VALVE

COOGL Ø 4 ... 12

- High flow performance

## Technical Data

**Medium:**

Compressed air, filtered,  
lubricated and non-lubricated

**Operating pressure:**

10 bar max.

**Ambient temperature:**

0°C ... +60°C

Air supply must be dry enough to avoid ice  
formation at temperatures below +2°C

**Tube sizes:**

4 ... 12 mm

**Tubing types:**

Nylon 11 or 12

Polyurethane 85, 95 or 98 durometer

## Materials

**Tube to tube bodies:**

Ø 4 ... Ø 8: PBT

Ø 10 ... Ø 12: Aluminium

**Threaded bodies:**

Nickel plated brass

**Seals:**

NBR (silicone free) u-packing and O-rings

**Release sleeve and backing ring:**

POM

**Grab-ring:**

Stainless steel

**Collar:**



Nickel plated brass

**Thread sealant:**

Threebond 2350BI



## ● Models - tube to tube

Model	Model	O/D Tube
		
COOGL0400	–	4
COOGL0600	–	6
COOGL0800	–	8
–	COOGL1000	10
–	COOGL1200	12

# QUICK EXHAUST VALVES

T70 G1/8 ... G1/2

- Enables air to be exhausted quickly from air reservoirs and cylinders
- Allows higher cylinder speeds to be achieved
- Simple, compact design and construction
- Very reliable in operation

## Technical Data

**Medium:**  
Compressed air, filtered, lubricated and non-lubricated

**Operating pressure:**  
0,5 ... 10 bar (T70)

**Ambient temperature:**  
-20°C ... +80°C  
Air supply must be dry enough to avoid ice formation at temperatures below +2°C

## Materials

**Body & cover:**  
Zinc alloy (T70\*1800 & T70\*2800), aluminium alloy (T70\*3800 & T70\*4800)

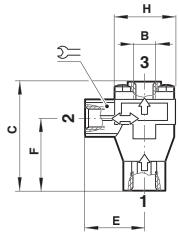
**Seals:**  
Nitrile (T70)

**O-ring:**  
Nitrile



## Dimensions

T70



Model	B	C	E	F	
T70C1800	G1/8	53	28	35,5	19
T70C2800	G1/4	53	28	35,5	19
T70C3800	G3/8	73,5	40	48	30
T70C4800	G1/2	73,5	40	48	30

## Models

Model	Port size BSPP	Flow (1 ... 2)** C*	Cv	Flow (2 ... 3)** C*	Cv
T70C1800	G1/8	3,8	0,93	7	1,72
T70C2800	G1/4	7,4	1,8	9,7	2,38
T70C3800	G3/8	14,5	3,55	20,5	5
T70C4800	G1/2	19,7	4,83	25	6,13

\* C = dm<sup>3</sup>/(s.bar). \*\* Flow factor measured at 6 bar inlet pressure.