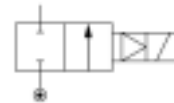


### General information

Lucifer ref.: 321K35  
 Global ref.: -  
 Housing ref.: 8993  
 Coil ref.: 488980  
 Protection class: -  
 Assembly wt. (g): 380

Body: Brass body  
 Seat disc: NBR  
 Ways notation: 2/2  
 Valve function: Normally closed  
 Valve actuation: Pilot operated  
 Mounting: Pipe mounting



### Specifications

#### Connection / Orifice

Port size (inches): 1/2  
 Nom. dia. (mm): 12  
 Orifice EXH. (mm): -

#### Flow factors

Qn (L/min): 3400  
 Qn EXH. (L/min): -  
 C (dm<sup>3</sup>/s bar): 12  
 Kv (L/min): 50  
 Kv EXH. (L/min): -  
 Qmax (L/min): 50

#### Temperature values (°C)

##### a. Fluid temperatures

	Min.	Max.
With air:	-10	75
With water:	0	75
With steam:	-	-
With oil:	-10	75

#### Pressure values (Bar)

Min. pressure: 0.30  
 Max. press. (DC): 7.00  
 Max. press. (AC): 10.00

#### Power values (W)

Power DC: 2.5  
 Power AC: 2

##### b. Ambient temperatures

Minimum: -10  
 Maximum: 50

**Dimension drawing**

	A	B	C	D	E	F	G	H	I	J	Dia.
	inch	mm	mm	mm	mm	mm	mm	mm	mm	mm	mm
<b>K31</b>	1/4	25	50	6.2	26	27	5.5	81	39	61	40
<b>K33</b>	3/8	25	50	6.2	26	27	5.5	81	39	61	40
<b>K35</b>	1/2	27.5	55	6.2	26	27	5.5	81	39	61	40
<b>K36</b>	3/4	40	80	9	33.5	32	8	96.5	46	68.5	56
<b>K37</b>	1	42.5	85	14.2	33.5	41	8	96.5	56	68.5	56