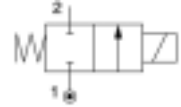


General information

Lucifer ref.: 121K3306
 Global ref.: 7121KBG3UV00
 Housing ref.: 2995
 Coil ref.: 481865
 Protection class: -
 Assembly wt. (g): 340

Body: Brass body
 Seat disc: FKM
 Ways notation: 2/2
 Valve function: Normally closed
 Valve actuation: Direct operated
 Mounting: Pipe mounting



Specifications

Connection / Orifice

Port size (inches): 3/8
 Nom. dia. (mm): 6
 Orifice EXH. (mm): -

Flow factors

Qn (L/min): 1100
 Qn EXH. (L/min): -
 C (dm³/s bar): 3.9
 Kv (L/min): 12
 Kv EXH. (L/min): -
 Qmax (L/min): 12.5

Temperature values (°C)

a. Fluid temperatures

	Min.	Max.
With air:	-10	100
With water:	0	100
With steam:	-	-
With oil:	-10	100

Pressure values (Bar)

Min. pressure: 0.00
 Max. press. (DC): 1.10
 Max. press. (AC): 5.00

Power values (W)

Power DC: 9
 Power AC: 8

b. Ambient temperatures

Minimum: -10
 Maximum: 50

