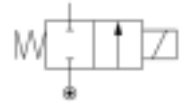


General information

Lucifer ref.: E121K03	Body: Brass body
Global ref.: 7121KBG2NF00	Seat disc: PCTFE
Housing ref.: 2995	Ways notation: 2/2
Coil ref.: 481865	Valve function: Normally closed
Protection class: -	Valve actuation: Direct operated
Assembly wt. (g): 290	Mounting: Pipe mounting



Specifications

Connection / Orifice

Port size (inches): 1/4
 Nom. dia. (mm): 3
 Orifice EXH. (mm): -

Flow factors

Qn (L/min): 315
 Qn EXH. (L/min): -
 C (dm³/s bar): 1.16
 Kv (L/min): 4.5
 Kv EXH. (L/min): -
 Qmax (L/min): 27

Temperature values (°C)

a. Fluid temperatures

	Min.	Max.
With air: -30		75
With water: 0		75
With steam: -		-
With oil: -30		75

Pressure values (Bar)

Min. pressure: 0.00
 Max. press. (DC): 7.00
 Max. press. (AC): 20.00

Power values (W)

Power DC: 9
 Power AC: 8

b. Ambient temperatures

Minimum: -10
 Maximum: 50

